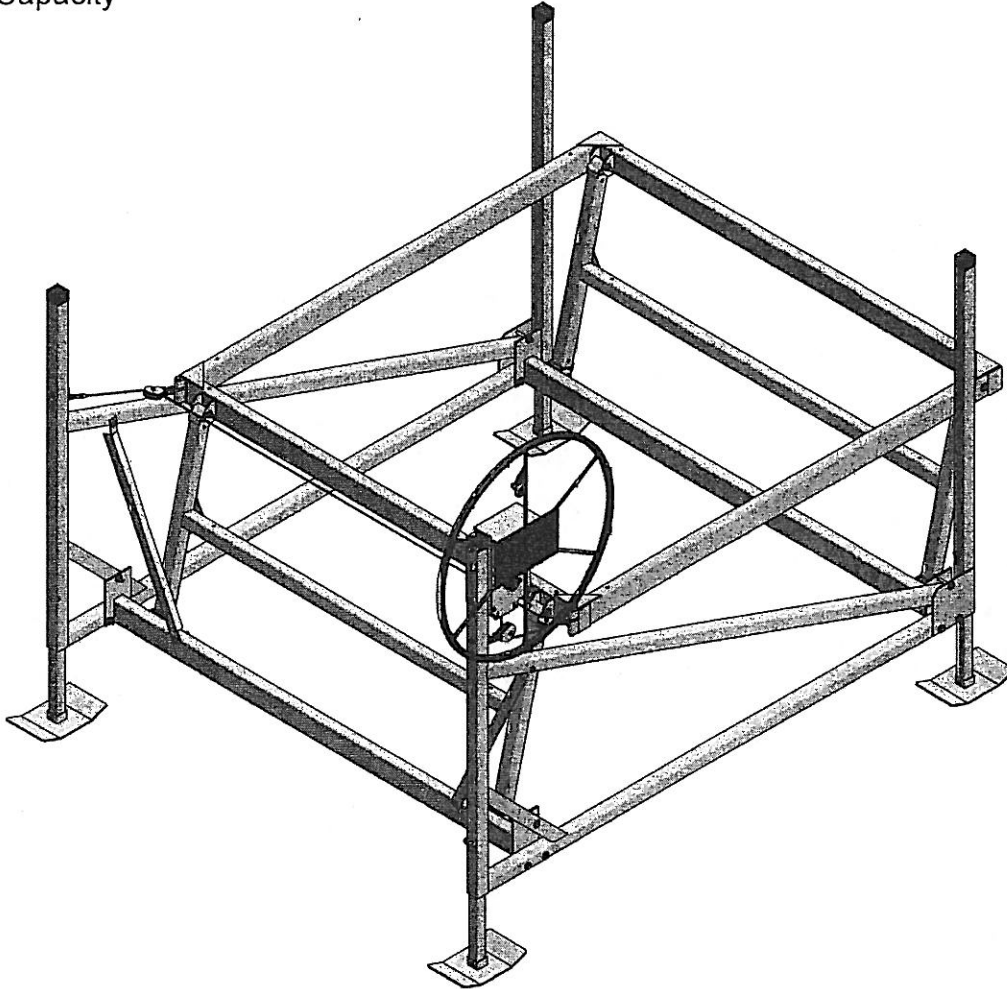


Phone: 218-739-4641  
Fax: 218-739-4008  
www.shoremaster.com



## 2596 Cantilever Lift:

Instructions and Safety Tips  
2500 lb. Capacity

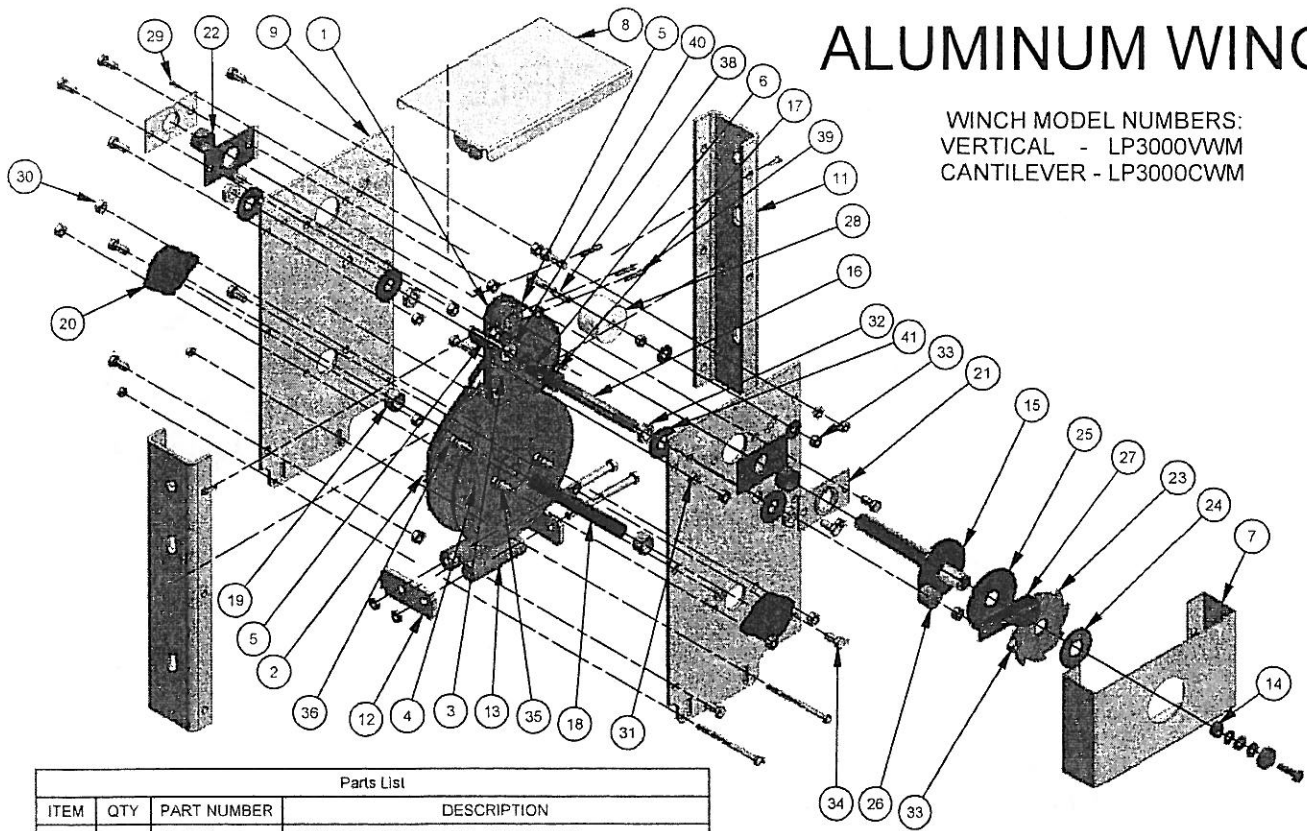


### CAUTION - PUT SAFETY FIRST

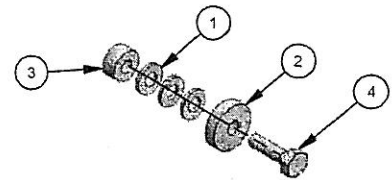
1. Before attempting to install or operate this hoist, study and fully understand the proper operating procedures and safety precautions outlined in this owner's manual.
2. Never exceed the recommended weight capacity of your lift. The lifted weight will include hull, engine, fuel, battery, and added accessories or gear. Weigh your fully loaded boat at a certified scale to be absolutely sure of the total weight.
3. Do not allow anyone on, in or under the lift while operating.
4. NOT COMPLYING WITH THE PROCEDURES AND PRECAUTIONS OUTLINED IN THIS MANUAL WILL INVALIDATE THE WARRANTY AND MAY RESULT IN PERSONAL INJURY OR DEATH.
5. If you have any questions about assembly, installation, operation or suitability of this product, contact an authorized dealer or ShoreMaster directly at 1-800-328-8945.

# ALUMINUM WINCH

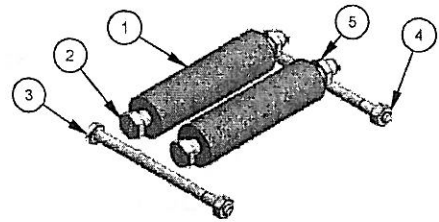
WINCH MODEL NUMBERS:  
 VERTICAL - LP3000VWM  
 CANTILEVER - LP3000CWM



Parts List			
ITEM	QTY	PART NUMBER	DESCRIPTION
1	1	G&GSM1024	DRIVE SPROCKET 40B12 ALUM WINCH
2	1	G&GSM1038	CHAIN LOWER #40-54 W/MASTER LINK ALUM WINCH
3	1	APALW3ISA	IDLER SPROCKET ASSEMBLY ALUM WINCH
4	1	G&GSM1020	CABLE HUB ASSEMBLY ALUM WINCH
5	1	G&GSM1037	CHAIN LOWER #40-38 W/MASTER LINK ALUM WINCH
6	2	APALW3BSH	BUSHING OILITE (B-1012-6)
7	1	APALW3SRD	SHROUD ALUM WINCH
8	1	APALW3COV	TOP COVER ALUM WINCH
9	2	APALW3PLT	PLATE ALUM WINCH
11	1	APALW3RTP	RIGHT SIDE ALUM WINCH
12	2	APALW3RPL	ROLLER PLATE ALUM WINCH
13	1	MGCBLGRBB	BOLT BAG CABLE GUIDE ROLLER ALUM WINCH
14	1	SMWHEEKIT	WHEEL KIT ALUM WINCH
15	1	APALW3USA	UPPER SHAFT ASSEMBLY ALUM WINCH
16	1	APALW3CSH	CENTER SHAFT ALUM WINCH
17	1	APALW3CSP	CENTER SPACER ALUM WINCH
18	1	APALW3LWS	LOWER SHAFT ALUM WINCH
19	2	APALW3LSP	LOWER SPACER ALUM WINCH
20	2	SM0711501	CAST FLANGE BEARING SBLF 204 12 N ALUM WINCH
21	4	WP0710073	FLANGETTE ALUM WINCH
22	2	WP0710074	BUSHING NYLON 7/8 ID X 5/8
23	1	G&GSM1006	RATCHET GEAR ALUM WINCH
24	1	*SEE NOTE*	*SEE NOTE @ RIGHT*
25	1	SM0700041	BRAKE PAD LARGE 3 5/16 OD ALUM WINCH
26	1	APALW3BSP	BRAKE SPACER ALUM WINCH
27	1	APALW3RPW	RATCHET PAWL ALUM WINCH
28	1	UHMWCT138	CHAIN TIGHTENER UHMW ALUM WINCH
29	3	S1024012B	SCREW SELF-TAP 10 - 32 X 5/8
30	19	B380RGNUT	NUT 3/8 BRASS
31	4	M38JAMNUT	NUT JAM 3/8
32	4	B58JAMNUT	NUT JAM 5/8 BRASS
33	3	M380CLNUT	NUT CENTER LOCK 3/8 ZINC
34	12	MS380034B	BOLT 3/8 X 3/4
35	4	MS380100B	BOLT 3/8 X 1
36	4	MS380114B	BOLT 3/8 X 1 1/4
37	1	MS380200B	BOLT 3/8 X 2
38	1	MS380212B	BOLT 3/8 X 2 1/2
39	3	SM0000001	PIN ROLL 1/4 DIA X 1 3/8
40	3	M380WASHR	WASHER FLAT 3/8 ZINC
41	4	M580WASHR	WASHER FLAT 5/8
43	1	APALW3LPL	Alum Winch 3000 Left Side



WHEEL KIT ALUM WINCH PARTS LIST			
ITEM	QTY	PART NUMBER	DESCRIPTION
1	3	S516WASHR	WASHER FLAT 5/16
2	1	BTDWASHR	WASHER FLAT ALUMINUM 1 1/8
3	1	WKITSPACR	SPACER
4	1	SN516100B	BOLT 5/16 X 1 NYLOC

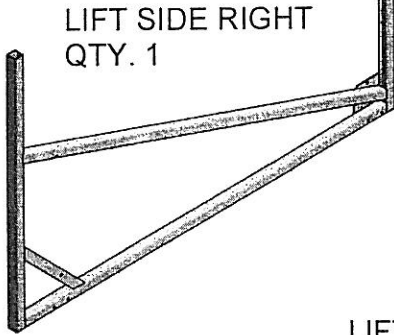


CABLE GUIDE ROLLER BOLT BAG LIST			
ITEM	QTY	PART NUMBER	DESCRIPTION
1	2	NYLTRN350	CABLE GUIDE ROLLER
2	2	MS380412B	BOLT 3/8 X 4 1/2
3	2	MS140400B	BOLT 1/4 X 4
4	2	S14LOCNUT	NUT 1/4 NYLOC
5	2	S38NYLJAM	NUT JAM 3/8 NYLOC BRASS

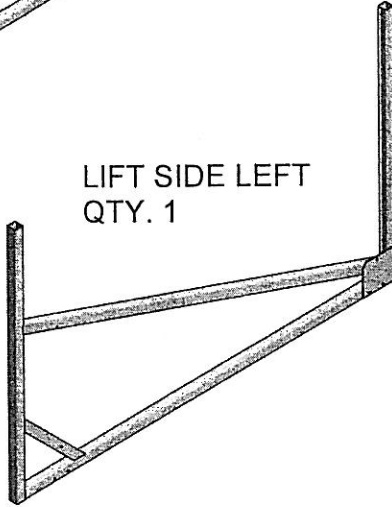
## NOTE

\*24\* VERTICAL - SM0700024 - WINCH TT 2101-1 OILITE BRAKE PAD  
 \*24\* CANTILEVER - SM0700023 - WINCH 2.0625OD BRAKE PAD SMALL

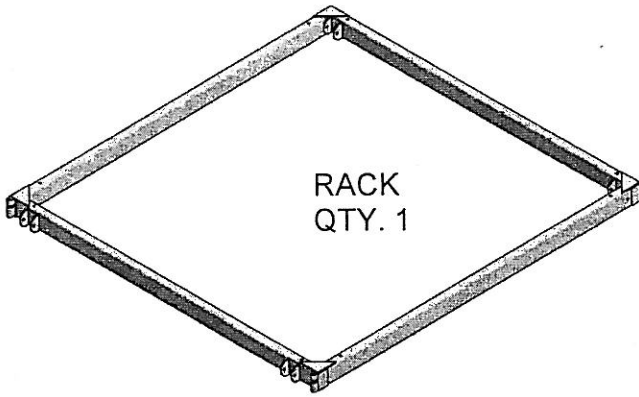
# PARTS LIST



LIFT SIDE RIGHT  
QTY. 1

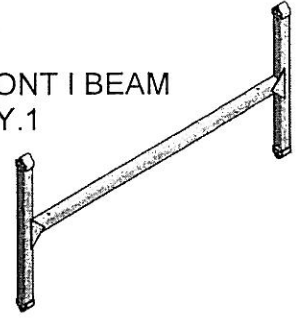


LIFT SIDE LEFT  
QTY. 1

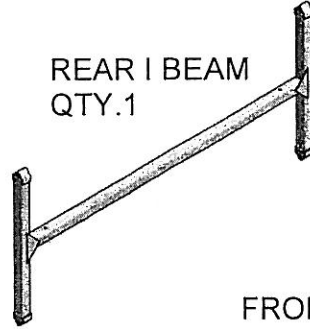


RACK  
QTY. 1

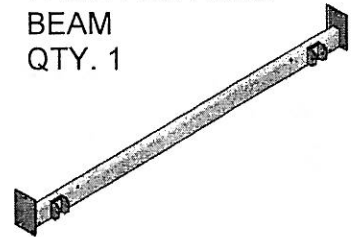
FRONT I BEAM  
QTY. 1



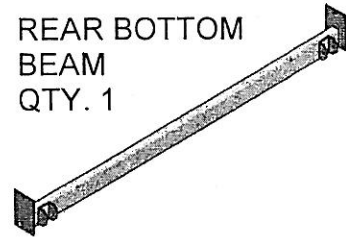
REAR I BEAM  
QTY. 1



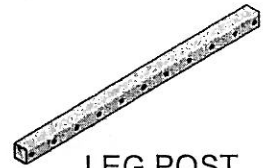
FRONT BOTTOM  
BEAM  
QTY. 1



REAR BOTTOM  
BEAM  
QTY. 1



LEG POST  
QTY. 4



BLUE CAP  
QTY. 3



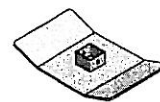
PULLEY WITH  
2 CHAIN LINKS  
QTY. 1



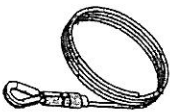
PULLEY WITH  
3 CHAIN LINKS  
QTY. 2



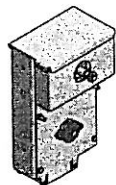
FOOT PAD  
QTY. 4



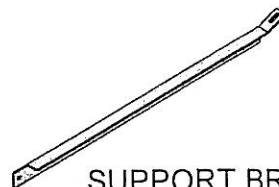
WINCH CABLE  
QTY. 1



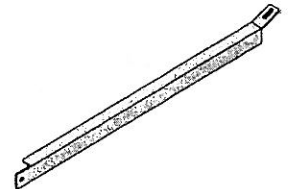
WINCH 3000  
QTY. 1



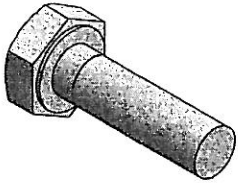
SUPPORT BRACE  
RIGHT  
QTY. 1



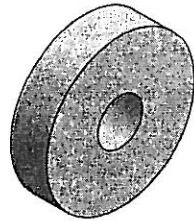
SUPPORT BRACE  
LEFT  
QTY. 1



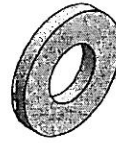
# WINCH HARDWARE AND FASTENERS



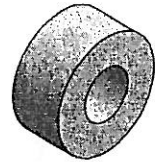
Bolt 5/16 x 1 Nyloc  
Qty. 1



Washer Flat  
Aluminum 1 1/8  
Qty. 1



Washer Flat 5/16  
Qty. 3



Spacer  
Qty. 1



Bolt 1/4 x 4  
Qty. 2



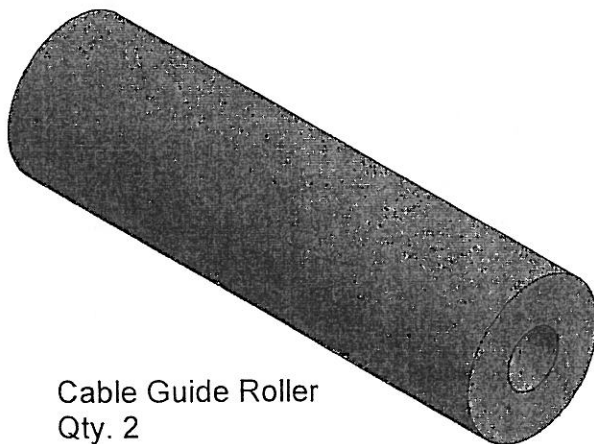
Nut 1/4 Nyloc  
Qty. 2



Bolt 3/8 x 4.5  
Qty. 2



Nut Jam 3/8 Nyloc Brass  
Qty. 2



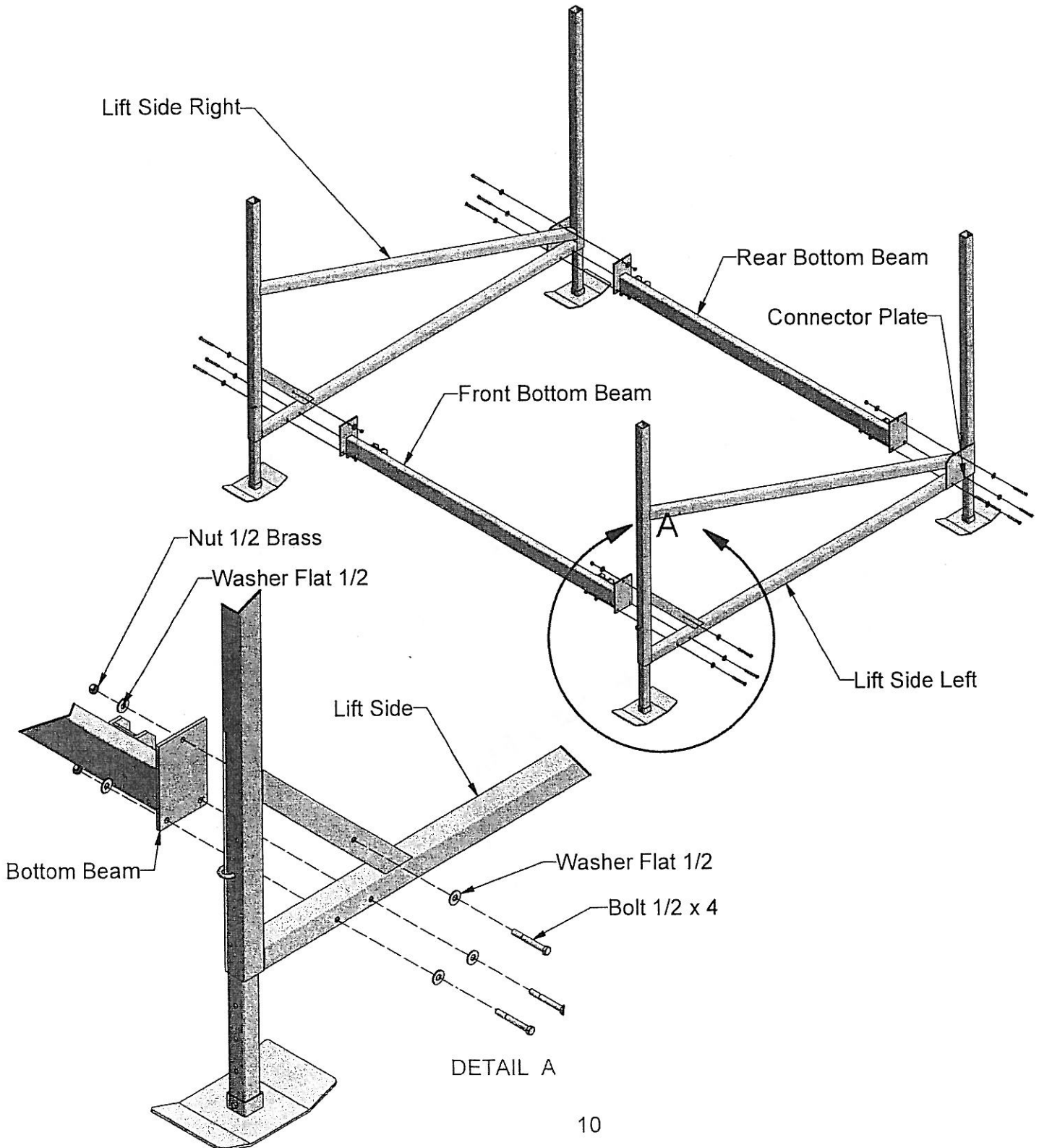
Cable Guide Roller  
Qty. 2

# STEP 2

Place the Lift Sides nine or ten feet apart, depending on the lift size. Attach the Front and Rear Bottom Beams to each Lift Sides Right and Left with three Bolts 1/2 x 4, six Washers Flat 1/2, and three Nuts 1/2 Brass at each place - as shown in Detail "A."

**Note:** The Lift Side Connector Plates must be positioned to the outside of the lift - as shown.

**Note:** The Front Bottom Beam Lift Hinges are closer to each other than the Rear Bottom Beam. The Bottom Beams must be positioned to the rear of the lift - as shown.



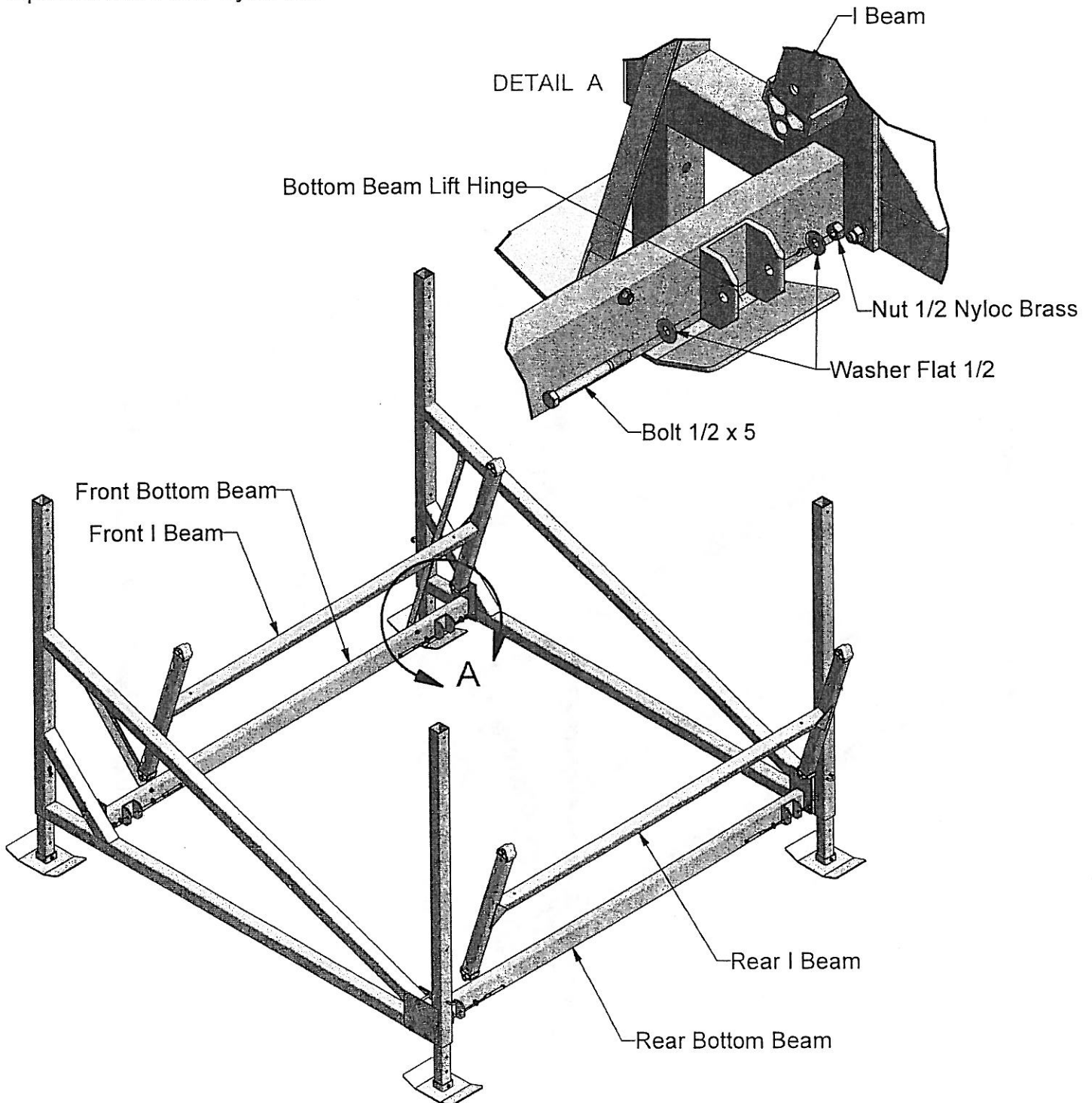
# STEP 4

Attach the Front I Beam to one Front Bottom Beam Lift Hinge with one Bolt 1/2 x 5, two Washers Flat 1/2 and one Nut 1/2 Nyloc Brass in two places - as shown.

Attach the Rear I Beam to one Rear Bottom Beam Lift Hinge with Bolt 1/2 x 5, two Washers Flat 1/2 and one Nut 1/2 Nyloc Brass in two places - as shown.

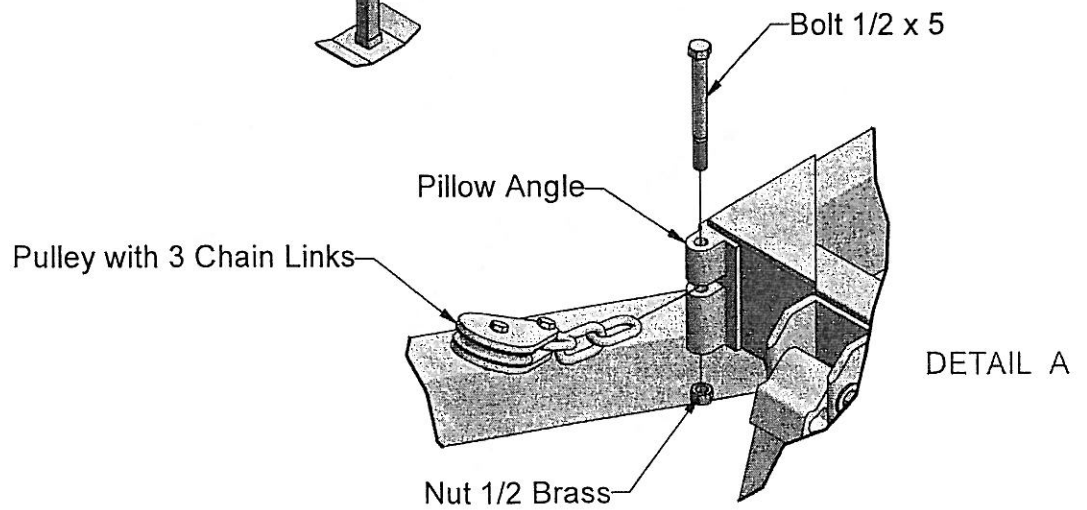
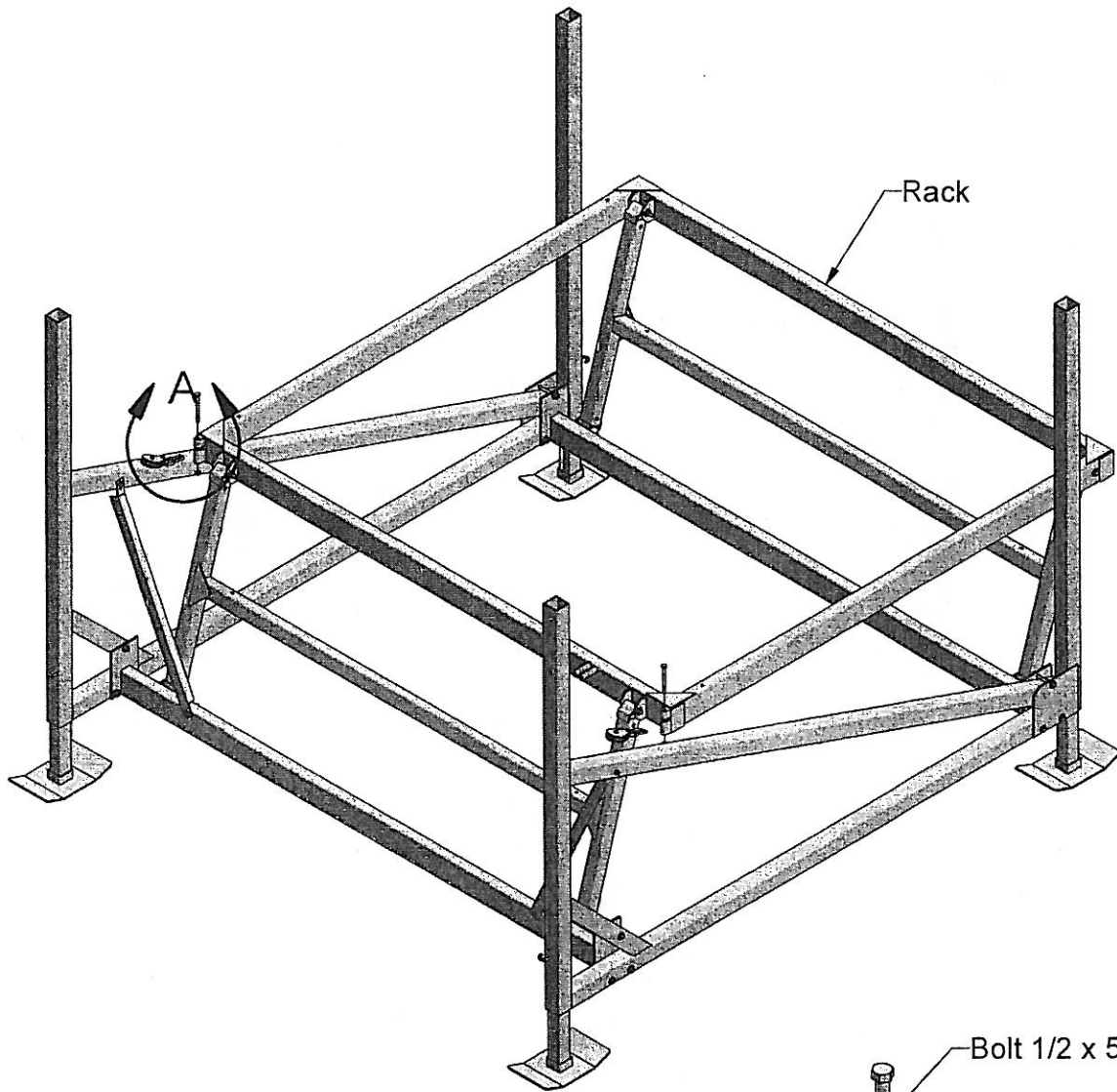
**Note:** The Front I Beam is narrower than the Rear I Beam.

**Note:** Do not overtighten Nyloc Nuts. Do not reuse Nyloc Nuts. If a Nyloc Nut is removed it must be replaced with a new Nyloc Nut.



# STEP 6

Attach one Pulley with 3 Chain Links to one of the Rack Pillow Angles with one Bolt 1/2 x 5 and one Nut 1/2 Brass in two places - as shown in Detail "A."



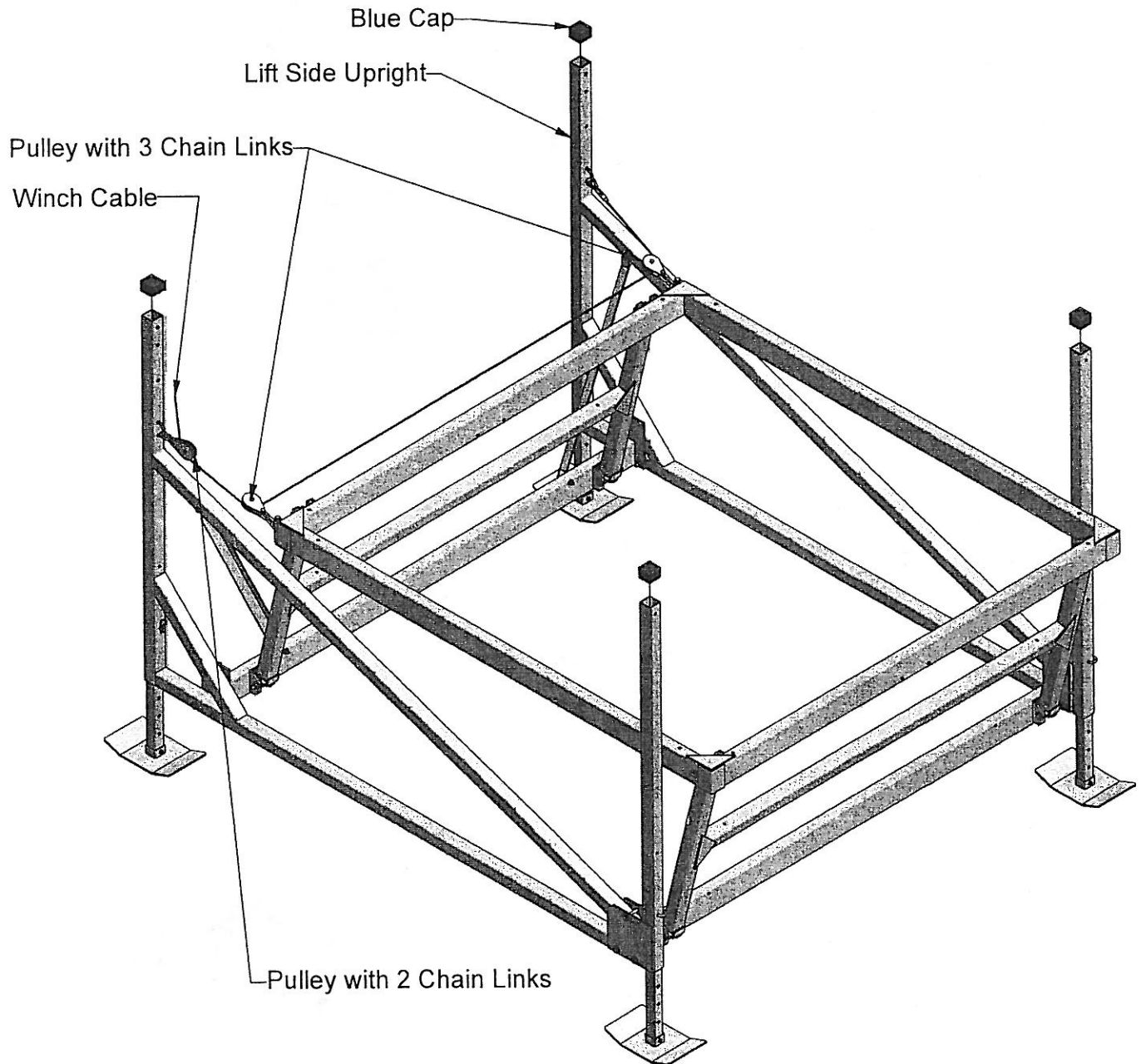


# STEP 8

Route the Winch Cable through the two Pulleys with 3 Chain Links and the one Pulley with 2 Chain Links - as shown.

**Note:** Wear leather gloves while handling the Winch Cable.

Place one Blue Cap each of the Lift Side Uprights - as shown.

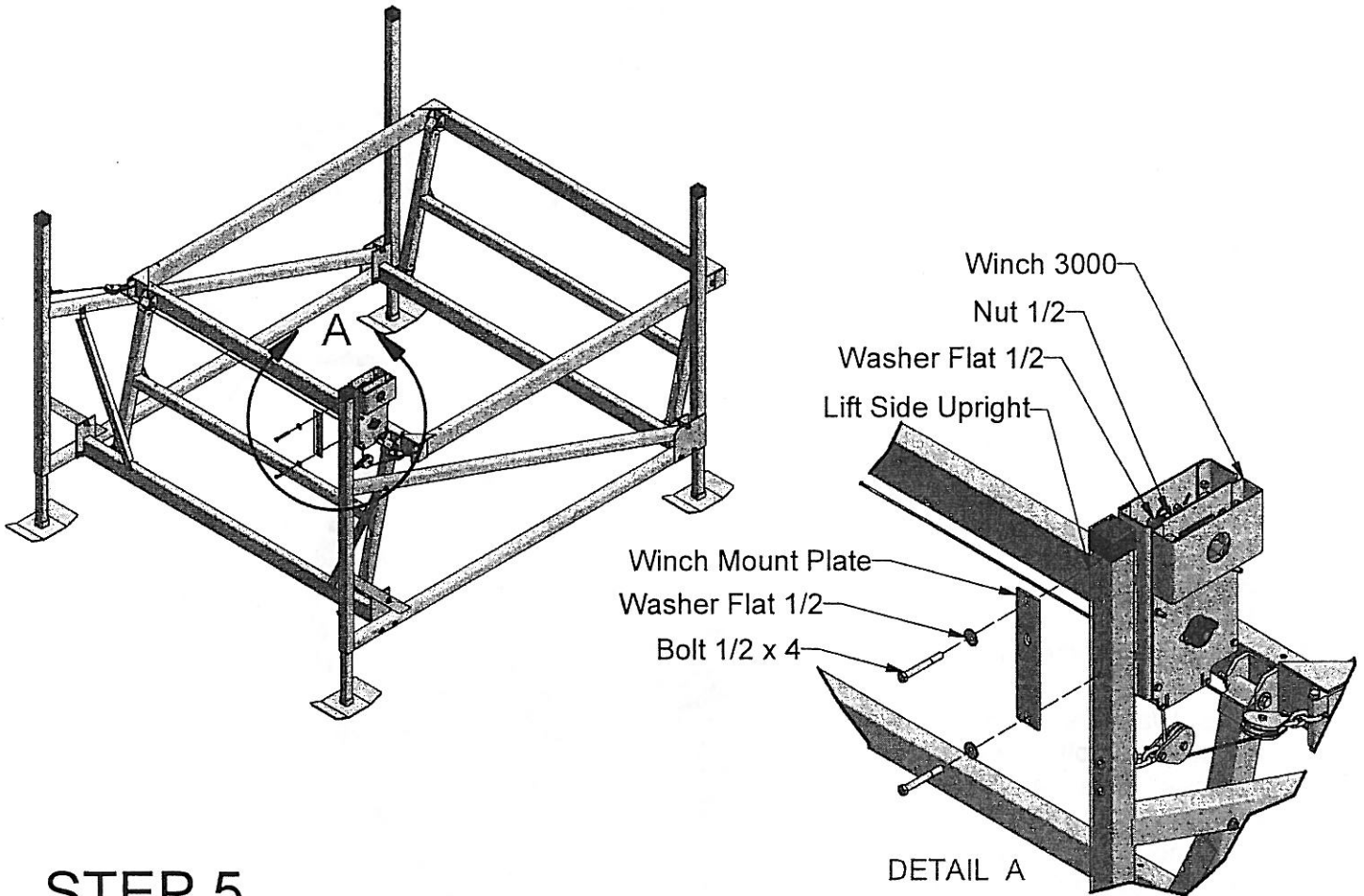


**Note:** This lift requires bunks or "V" rack to be installed prior to use. Instructions for bunks and racks are included separately. See your dealer if you have not yet purchased bunks or racks.



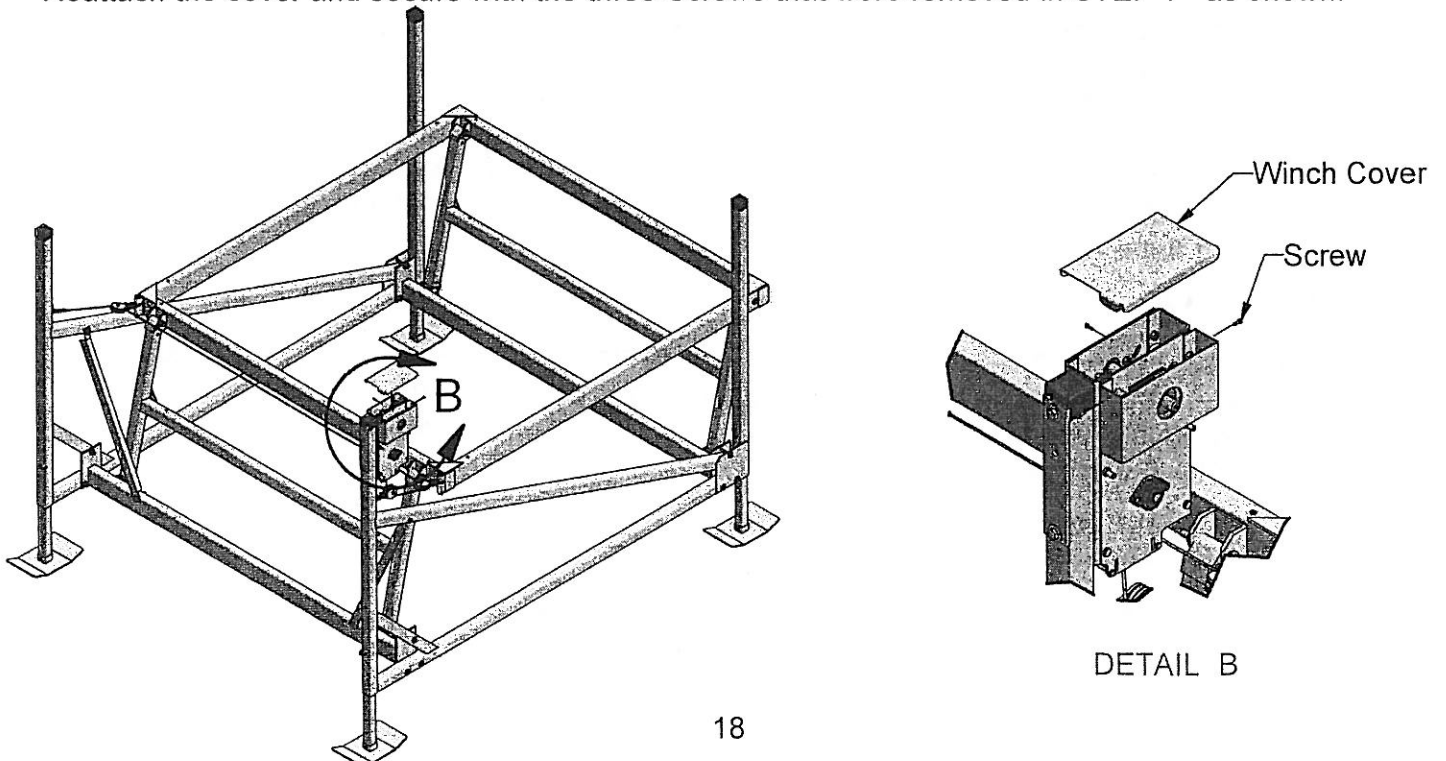
# STEP 4

Attach the Winch 3000 and Winch Mount Plate to the Lift Side Upright. Secure with two Bolts 1/2 x 4, four Washers Flat 1/2 and two Nuts 1/2 - as shown in Detail "A."



# STEP 5

Reattach the cover and secure with the three Screws that were removed in STEP 1 - as shown.



# INSTALLATION INSTRUCTIONS

Do not under any circumstances, endanger yourself or risk damage to your lift or boat when installing.

- Situations will widely vary between installation sites. ShoreMaster recommends that your dealer or other trained boat lift installer train you and perform the initial installation.
- Wear protective gloves, clothing and eyewear when assembling and installing the lift.
- Do not assemble, install or use this product if items are missing or damaged.

The following are guidelines or suggestions for installation:

## STEP 1

Measure the water depth of the position you want to locate the lift. Measurements should be taken at both the projected position of the end nearest shore and end furthest from shore.

## STEP 2

Before installing, adjust lift legs so the boat can float into position before raising, while still allowing a high enough position so the boat can be fully raised up and out of the water.

## STEP 3

Carry, lift, roll, float or slide the lift into position alongside the dock. Ask your dealer about a wheel caddy unit to allow your lift to be rolled into position.

## STEP 4

Ensure that your lift is level. Measure the distance from the top of the cross beam to the water surface. The distance at each of the four corners of the lift should be within two inches of each other. If they are not, adjust the legs accordingly.

**Note:** If the lift legs will extend 3 feet or more, ShoreMaster recommends deep water braces to stabilize and strengthen the lift. Ask your dealer for more information.

### CAUTION

The lift must be resting on the water bottom in a level, secure and stable position for safe operation. An unstable lift installation could result in tipping of the lift during operation, causing damage to watercraft and a crushing or pinching injury to the operator or bystanders.

## STEP 5

After loading and operating the lift pursuant to the operating instructions, remove the boat and recheck that the lift remains level.

## STEP 5

After loading and operating the lift, remove the boat and recheck that the lift remains level. (See Step 4 of the Installation Instructions.) If the lift is not level, the legs should be adjusted accordingly. Because the lift may settle and become unbalanced, the lift levelness should be rechecked two weeks after installation and periodically as needed.

## STEP 6

If lift is without a boat in it for more than one day, raise the rack (pulleys) fully out of the water to help prevent corrosion of these parts. At all times, make sure the boat is stored high enough out of the water to avoid wave action against the hull. A moving boat as a result of wave action will damage the lift and can take the boat off the lift.

## CAUTIONS:

1. Do not over raise lift rack. Over raising could cause damage to winch, cables or other parts.
2. Do not over lower rack so slack develops in cable. Doing this could cause cable to jump off winch spool. This may result in sloppy wrapping of cable next time you raise the lift, resulting in premature wear or cable breaking. Turn wheel down one or two turns past point when craft begins to float (This must always be at some point before lift rack is contacting rear bottom beam). Then turn wheel up slightly until clicking sound is heard to secure wheel position and brake on winch.
3. Properly cover your boat, or pull your boat's plug when the boat is in a raised position. Rain water accumulating in your bilge can quickly increase your gross weight over the capacity of the lift.
4. Do not leave lift, or boat on lift, in water if ice formation is possible. Ice can severely damage your boatlift.

## SAFETY MAINTENANCE

### Monthly Checks

Check cables for frays, corrosion or breaks at least once a month. A cable breaking while boat is in lift could damage boat or lift. Severe bodily injury could also occur.

### Spring and Fall Checks

1. Inspect nuts and bolts for damage, wear or loose connections. Tighten or replace parts as needed.
2. Inspect lift frame, pulleys, winch and pivot points for unusual wear, damage or bent parts. Replace or repair as needed.
3. Lubricate winch and wheel threads. Do not get lubricant on brakepads! Brake will fail and wheel will spin down if brake pads are lubricated.
4. Check and lubricate pulleys to ensure that they are turning freely.